



Set-Up Sheet Yamaha Grizzly

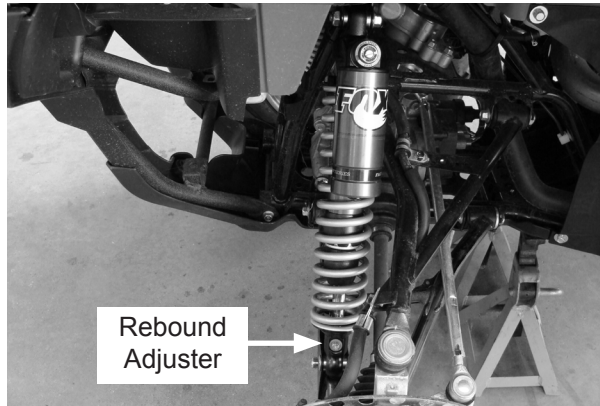
Shock Mounting Instructions



O-rings and reducers are pre-installed in the upper mounting positions. Bushings and sleeves are pre-installed in the lower mounting positions. When mounting all shock absorbers, position the rebound adjusters to face the ATV's wheels.



FOX 1.5 Podium RC2 are equipped with external Dual Speed Compression (DSC) and rebound adjusters. Each adjuster has a total of 24 clicks. Start counting clicks from the fully closed (clockwise) limit.



High Speed
(17mm HEX)

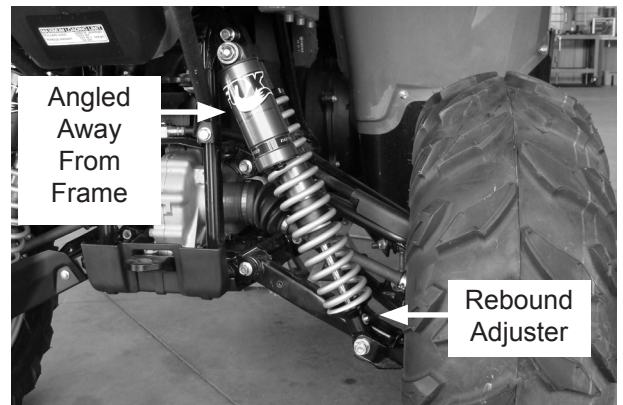


Low Speed
(FLAT BLADE)

Front shocks: The Yamaha Grizzly front shocks are not left and right specific. When mounted correctly, the piggyback reservoir end of the shock will be connected to the frame with the reservoir facing the wheel. The lower shock eyelet will be connected to the a-arm mount with the adjuster facing the wheel, as shown above. Torque all mounting hardware to vehicle manufacturers specifications.



**All
Adjusters
Preset
12
Clicks
Out**



Rear shocks: The Yamaha Grizzly rear shocks are left and right specific. When mounted correctly, the piggyback reservoir end of the shock will be connected to the frame with the reservoir facing the rear of the vehicle and angled away from the frame. The lower shock eyelet will be connected to the a-arm with the adjuster facing the wheel, as shown above. Torque all mounting hardware to the vehicle manufacturers specifications.



Increase or Decrease Ride Height: Place vehicle on jack stands to adjust the ride height of the vehicle, loosen preload adjuster screw and rotate spring preload adjuster ring clockwise to increase spring preload and counter clockwise to decrease spring preload.

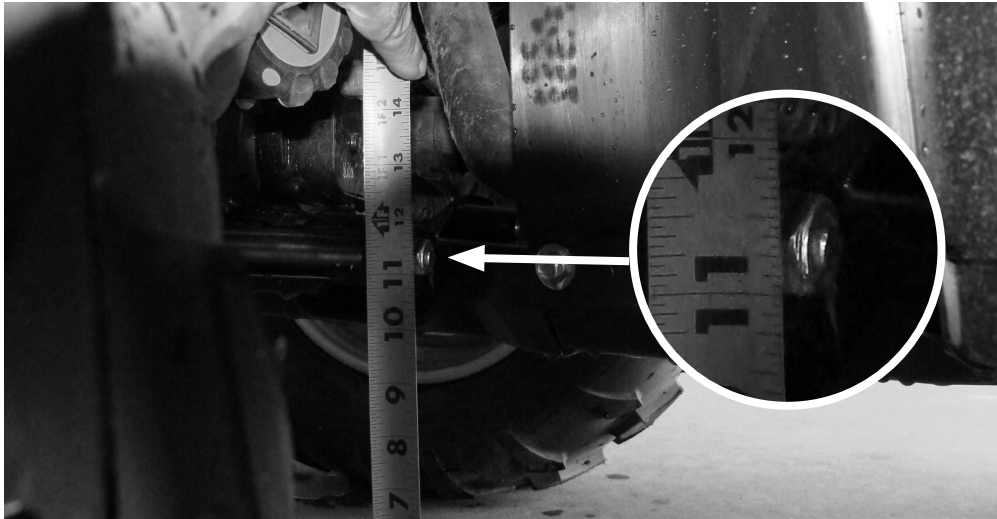
**Front maximum spring preload: 1.610 inches.
Rear maximum spring preload: 1.310 inches.**



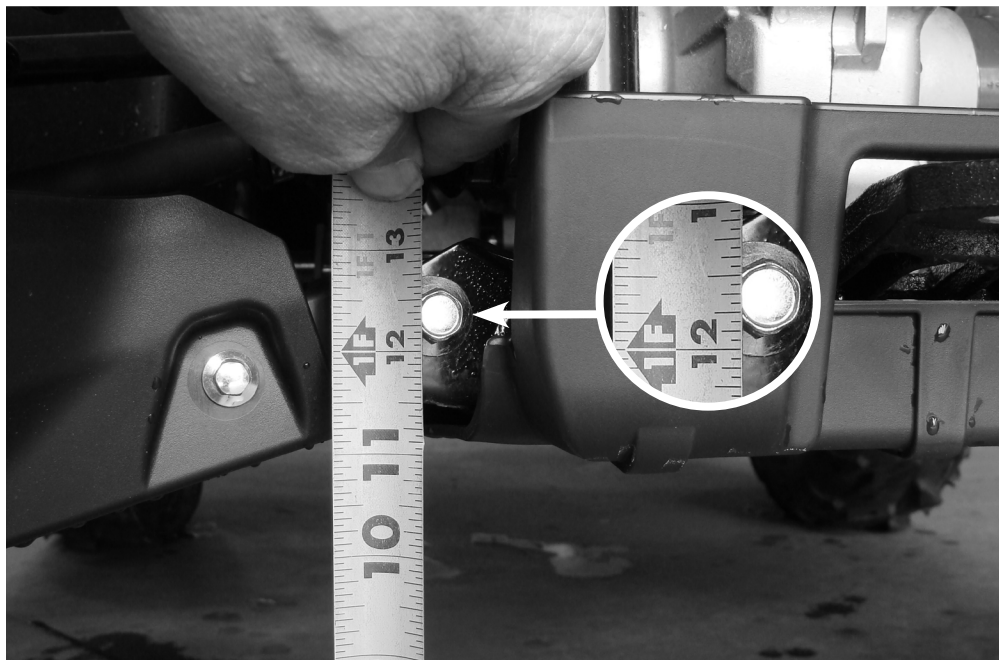
Set-Up Sheet Yamaha Grizzly

Setting Ride Height Instructions

With the vehicle on a level floor and all shocks have been installed, push down on the front and rear racks 3 times to set the suspension. Roll the vehicle back and forth a couple of feet. This will remove any scrub or friction left in the tire, before taking any ride height measurements.



Front Suspension: Measure the height from the floor to the center of the front lower rear a-arm mount. The standard height is **11.250 - 11.500 inches**. Ensure this is equal from side to side on the vehicle. Adjust spring preload to obtain these measurements.



Rear Suspension: Measure the height from the floor to the center of the rear lower a-arm mount. The standard height is **12.250 - 12.500 inches**. Ensure this is equal from side to side on the vehicle. Adjust spring preload to obtain these measurements.